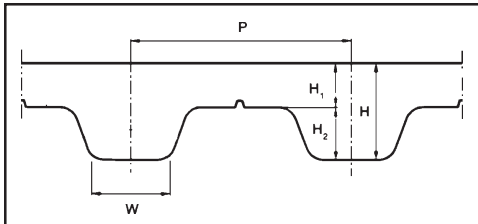


## Section 5.

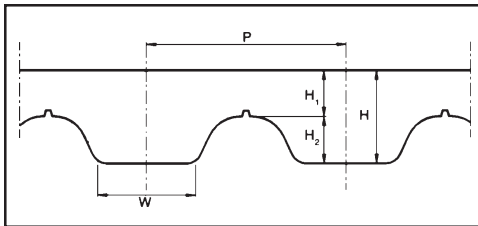
# Open-end & Spliced Polyurethane Timing Belts

### T5 - T10 - T20



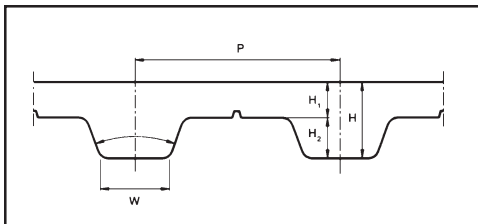
	<u>T5</u>	<u>T10</u>	<u>T20</u>
P	5	10	20
H1	1.0	2.0	3.0
H2	1.2	2.5	5.0
H	2.2	4.5	8.0
W	1.8	3.5	6.5

### AT5 - AT10 - AT20



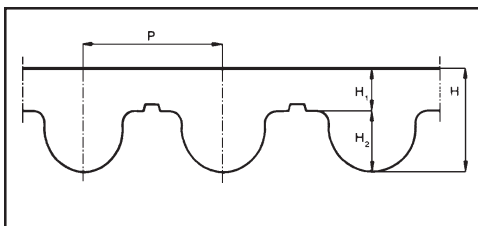
	<u>AT5</u>	<u>AT10</u>	<u>AT20</u>
P	5	10	20
H1	1.5	2.0	3.0
H2	1.2	2.5	5.0
H	2.7	4.5	8.0
W	2.5	5.0	10.0

### XL - L - H - XH



	<u>XL</u>	<u>L</u>	<u>H</u>	<u>XH</u>
P	5.08	9.52	12.7	22.22
H1	1.03	1.7	2.01	4.85
H2	1.27	1.9	2.29	6.35
H	2.3	3.6	4.3	11.2
W	1.37	3.25	4.43	7.94

### 5M - 8M - 14M



	<u>5M</u>	<u>8M</u>	<u>14M</u>
P	5	8	14
H1	1.5	2.2	3.9
H2	2.1	3.4	6.1
H	3.6	5.6	10.0

- Good abrasion resistance
- Steel or kevlar reinforced for excellent dimensional stability
- Non-dusting / Non-marking
- High resistance to oil and grease
- Nylon fabric available on tooth and/or back side
- Open-end cut lengths - no minimum quantity

**T5 - T10 - T20**

**Polyurethane Open-end and Spliced**

SIZE	FULL ROLL LENGTH/FT.	LIST PRICE PER FT.	LIST PRICE TO SPLICE ENDLESS	MINIMUM SPLICED LENGTH
6T5	164	2.98	26.73	900 mm
8T5	164	4.28	27.80	900 mm
10T5	164	4.31	28.96	900 mm
12T5	164	5.17	30.30	900 mm
16T5	328	5.74	32.34	900 mm
20T5	328	8.41	34.57	900 mm
25T5	328	10.51	36.71	900 mm
32T5	328	12.41	41.25	900 mm
50T5	328	17.22	49.09	900 mm
*75T5	328	29.59	73.68	900 mm
*100T5	328	39.46	98.23	900 mm
12T10	164	6.00	29.50	900 mm
16T10	328	8.00	33.41	900 mm
20T10	328	8.66	33.64	900 mm
25T10	328	9.18	33.87	900 mm
32T10	328	12.20	43.48	900 mm
40T10	328	13.63	53.28	900 mm
50T10	328	14.57	54.62	900 mm
75T10	328	21.99	82.95	900 mm
100T10	328	29.88	100.68	900 mm
*150T10	328	51.36	160.16	900 mm
25T20	328	12.20	55.78	1000 mm
32T20	328	15.78	62.46	1000 mm
50T20	328	25.33	79.12	1000 mm
75T20	328	40.84	93.55	1000 mm
100T20	328	57.40	120.28	1000 mm
*125T20	328	82.19	159.44	1000 mm
*150T20	328	98.64	180.50	1000 mm

\* Call for delivery

**AT5 - AT10 - AT20**

**Polyurethane Open-end and Spliced**

SIZE	FULL ROLL LENGTH/FT.	LIST PRICE PER FT.	LIST PRICE TO SPLICE ENDLESS	MINIMUM SPLICED LENGTH
6AT5	164	3.58	28.87	900 mm
10AT5	164	5.16	31.27	900 mm
16AT5	328	6.89	34.93	900 mm
20AT5	328	10.09	37.34	900 mm
25AT5	328	12.61	39.65	900 mm
32AT5	328	14.90	44.55	900 mm
50AT5	328	20.66	53.20	900 mm
*75AT5	328	35.51	79.57	900 mm
*100AT5	328	47.34	106.09	900 mm
16AT10	328	9.60	36.09	900 mm
20AT10	328	10.39	38.49	900 mm
25AT10	328	11.02	40.90	900 mm
32AT10	328	14.64	46.96	900 mm
40AT10	328	16.91	57.54	900 mm
50AT10	328	17.48	58.99	900 mm
75AT10	328	26.39	89.59	900 mm
100AT10	328	35.86	108.74	900 mm
*120AT10	328	43.05	130.54	900 mm
*150AT10	328	53.81	163.18	900 mm
25AT20	328	15.81	60.24	1000 mm
32AT20	328	20.46	67.46	1000 mm
50AT20	328	32.82	85.49	1000 mm
75AT20	328	53.00	101.04	1000 mm
100AT20	328	84.40	129.91	1000 mm
120AT20	328	102.66	155.90	1000 mm
150AT20	328	122.74	194.87	1000 mm
*200AT20	328	157.81	243.69	1000 mm

\* Call for delivery

**XL - L - H - XH**

**Polyurethane Open-end and Spliced**

SIZE	FULL ROLL LENGTH/FT.	LIST PRICE PER FT.	LIST PRICE TO SPLICE ENDLESS	MINIMUM SPLICED LENGTH
XL025	164	3.26	28.16	36 in.
XL031	164	3.95	29.14	36 in.
XL037	164	4.31	30.56	36 in.
XL050	164	5.31	32.34	36 in.
XL075	328	8.97	36.53	36 in.
XL100	328	11.48	38.85	36 in.
XL150	328	17.24	45.42	36 in.
XL200	328	22.96	51.95	36 in.
L037	164	3.80	23.52	36 in.
L050	164	4.41	29.49	36 in.
L075	328	7.03	37.87	36 in.
L100	328	8.00	42.77	36 in.
L150	328	10.98	54.62	36 in.
L200	328	13.75	61.92	36 in.
L300	328	20.62	92.92	36 in.
L400	328	27.50	123.89	36 in.
H050	164	5.02	29.49	36 in.
H075	328	7.75	37.87	36 in.
H100	328	8.90	42.77	36 in.
H150	328	12.27	57.47	36 in.
H200	328	14.06	61.92	36 in.
H300	328	21.38	80.01	36 in.
H400	328	34.55	97.12	36 in.
*H500	328	46.01	97.61	36 in.
*H600	328	54.58	106.17	36 in.
XH100	328	13.63	58.62	40 in.
XH150	328	20.67	62.46	40 in.
XH200	328	28.31	79.12	40 in.
XH300	328	45.71	93.55	40 in.
XH400	328	64.28	120.28	40 in.
*XH600	328	96.46	180.52	40 in.

\* Call for delivery

**5M - 8M - 14M**

**Polyurethane Open-end and Spliced**

SIZE	FULL ROLL LENGTH/FT.	LIST PRICE PER FT.	LIST PRICE TO SPLICE ENDLESS	MINIMUM SPLICED LENGTH
5M10	164	5.85	32.84	900 mm
5M15	328	7.80	36.68	900 mm
5M25	328	14.37	41.63	900 mm
5M50	328	23.43	55.67	900 mm
8M10	164	7.04	34.09	900 mm
8M15	328	11.40	37.89	900 mm
8M20	328	13.08	40.42	900 mm
8M30	328	17.39	49.31	900 mm
8M50	328	20.75	61.94	900 mm
8M85	328	35.48	104.86	900 mm
8M100	328	42.58	114.18	900 mm
14M25	328	17.38	63.25	1000 mm
14M40	328	29.27	88.54	1000 mm
14M55	328	41.32	98.70	1000 mm
14M85	328	68.74	118.22	1000 mm
14M100	328	85.51	136.40	1000 mm
*14M115	328	98.64	156.94	1000 mm

\* Call for delivery

# Metric System & Helpful Power Transmission Conversions

## METER: THE BASE UNIT OF THE METRIC SYSTEM:

UNIT	SYMBOL	METER EQUIVALENT
1000 MILLIMETERS .....	mm .....	EQUALS 1 METER
100 CENTIMETERS .....	cm .....	EQUALS 1 METER
10 DECIMETERS .....	dm .....	EQUALS 1 METER
1 DECAMETER .....	dam .....	EQUALS 10 METERS
1 HECTOMETER .....	hm .....	EQUALS 100 METERS
1 KILOMETER .....	km .....	EQUALS 1000 METERS

## METRIC TO U.S. CONVERSIONS:

25.4 MILLIMETERS .....	1 INCH
1 METER .....	3.281 FEET
1 METER .....	1.094 YARDS
1 KILOMETER .....	.621+ MILES
1 KILOWATT .....	1.34 HP

## ELECTRIC MOTOR CONVERSIONS (APPROXIMATIONS) TO TORQUE:

MOTOR SPEED	TORQUE DEVELOPED PER H.P.
1800 RPM .....	3 lb. ft.
1200 RPM .....	4.5 lb. ft.
900 RPM .....	6 lb. ft.

## ELECTRIC MOTOR AMPERAGE/HORSEPOWER CONVERSIONS:

VOLTS	PHASE	AMPERAGE DRAW PER HORSEPOWER
550	3	1.0
440	3	1.25
220	3	2.5
220	1	5.0
110	1	10.0