



# 7006 ECOLOC

## 7006 ECOLOC

All the positive features of series RfN 7003 ECOLOC. As a result of the larger flange diameter there is also no axial displacement of the hub during mounting. Frequently used for belt pulleys.

### Technical Information

#### ■ Surface finishes

For shafts and hub bores  
 $R_a = 1.6 \mu\text{m}$

#### ■ Tolerances

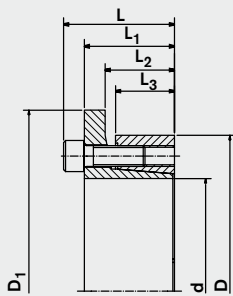
We recommend the following mounting tolerances  
**shaft: h8 · hub tolerances: H8**

### Ordering example

Type	d x D
7006 ECOLOC	19 x 47

Metric Dimensions								T or / o F <sub>ax</sub>		T <sub>A</sub> P <sub>w</sub> P <sub>n</sub>			Screws	
d	x	D	L	L <sub>1</sub>	L <sub>2</sub>	L <sub>3</sub>	D <sub>1</sub>	Nm	kN	Nm	P <sub>w</sub>	P <sub>n</sub>	Quantity	Size
mm										N / mm <sup>2</sup>				
19	x	47	34	28	23	17	56	270	28	17	215	95	5	x M6
20	x	47	34	28	23	17	56	280	28	17	215	95	5	x M6
22	x	47	34	28	23	17	56	310	28	17	195	95	5	x M6
24	x	50	34	28	23	17	59	400	32	17	215	105	6	x M6
25	x	50	34	28	23	17	59	440	34	17	210	105	6	x M6
28	x	55	34	28	23	17	64	490	34	17	195	100	6	x M6
30	x	55	34	28	23	17	64	530	34	17	185	100	6	x M6
32	x	60	34	28	23	17	69	750	46	17	210	110	8	x M6
35	x	60	34	28	23	17	69	820	46	17	185	110	8	x M6
-	-	-	-	-	-	-	-	-	-	-	-	-	-	-
38	x	65	34	28	23	17	74	890	46	17	190	110	8	x M6
40	x	65	34	28	23	17	74	940	46	17	185	110	8	x M6
42	x	75	41	33	27	20	84	1600	70	41	240	130	7	x M8
45	x	75	41	33	27	20	84	1720	70	41	225	130	7	x M8
-	-	-	-	-	-	-	-	-	-	-	-	-	-	-
-	-	-	-	-	-	-	-	-	-	-	-	-	-	-
50	x	80	41	33	27	20	89	1890	74	41	205	125	7	x M8
-	-	-	-	-	-	-	-	-	-	-	-	-	-	-
-	-	-	-	-	-	-	-	-	-	-	-	-	-	-
55	x	85	41	33	27	20	94	2400	76	41	210	130	8	x M8
-	-	-	-	-	-	-	-	-	-	-	-	-	-	-
60	x	90	41	33	27	20	99	2650	76	41	185	120	8	x M8
-	-	-	-	-	-	-	-	-	-	-	-	-	-	-
-	-	-	-	-	-	-	-	-	-	-	-	-	-	-
65	x	95	41	33	27	20	104	3190	80	41	195	130	9	x M8
-	-	-	-	-	-	-	-	-	-	-	-	-	-	-
70	x	110	50	40	32	24	119	4910	130	83	215	135	8	x M10
-	-	-	-	-	-	-	-	-	-	-	-	-	-	-
75	x	115	50	40	32	24	124	5150	130	83	195	125	8	x M10
80	x	120	50	40	32	24	129	5490	130	83	185	120	8	x M10
-	-	-	-	-	-	-	-	-	-	-	-	-	-	-
85	x	125	50	40	32	24	134	6620	140	83	195	130	9	x M10
-	-	-	-	-	-	-	-	-	-	-	-	-	-	-
90	x	130	50	40	32	24	139	6960	140	83	185	125	9	x M10
95	x	135	50	40	32	24	144	8190	160	83	195	135	10	x M10
100	x	145	56	44	34	26	154	10100	170	145	205	145	8	x M12
-	-	-	-	-	-	-	-	-	-	-	-	-	-	-
110	x	155	56	44	34	26	164	11000	170	145	190	135	8	x M12
120	x	165	56	44	34	26	174	13600	200	145	205	140	9	x M12
-	-	-	-	-	-	-	-	-	-	-	-	-	-	-
130	x	180	64	52	42	34	189	19000	250	145	185	135	12	x M12
140	x	190	68	54	42	34	199	21800	270	230	175	125	9	x M14
150	x	200	68	54	42	34	209	25600	320	230	185	135	10	x M14
160	x	210	68	54	42	34	219	26100	320	230	175	135	11	x M14
170	x	225	78	64	52	44	234	30300	340	230	140	105	12	x M14
180	x	235	78	64	52	44	244	32000	340	230	135	105	12	x M14

other sizes on request



1 inch = 25.4 mm • 1 ft-lbs = 1.3558 Nm • 1 lbs = 4.4482 N • 1 psi = 0.0069 N/mm<sup>2</sup>

**Notes**

**d x D, L, L<sub>1</sub>, L<sub>2</sub>, L<sub>3</sub> =**  
basic dimensions, loosened Locking Assembly,

**T** = transmissible torque

**F<sub>ax</sub>** = transmissible axial forces

**T<sub>A</sub>** = Screw-tightening torque

**P<sub>w</sub>** = surface pressure between Locking Assembly and shaft

**P<sub>n</sub>** = surface pressure between Locking Assembly and hub

**x** = approx. 3 mm space for mounting!

d	Dimensions /								T or / o F <sub>ax</sub>		T <sub>A</sub>	P <sub>w</sub>	P <sub>n</sub>	Screws		
	d	x	D	L	L <sub>1</sub>	L <sub>2</sub>	L <sub>3</sub>	D <sub>1</sub>	ft-lbs	lbs				ft-lbs	psi	Quantity
		inch		inch												
3/4	0.750	x	1.850	1.339	1.102	0.906	0.669	2.205	200	6290	13	31160	13500	5	x	M6
-	-	-	-	-	-	-	-	-	-	-	-	-	-	-	-	-
7/8	0.875	x	1.850	1.339	1.102	0.906	0.669	2.205	230	6290	13	28400	13500	5	x	M6
-	-	-	-	-	-	-	-	-	-	-	-	-	-	-	-	-
1	1.000	x	1.969	1.339	1.102	0.906	0.669	2.323	325	7640	13	30400	15500	6	x	M6
1 1/8	1.125	x	2.165	1.339	1.102	0.906	0.669	2.520	360	7640	13	28400	14200	6	x	M6
1 3/16	1.188	x	2.165	1.339	1.102	0.906	0.669	2.520	390	7640	13	27000	14200	6	x	M6
1 1/4	1.250	x	2.362	1.339	1.102	0.906	0.669	2.717	555	10300	13	30400	16200	8	x	M6
1 3/8	1.375	x	2.362	1.339	1.102	0.906	0.669	2.717	605	10300	13	27000	16200	8	x	M6
1 7/16	1.438	x	2.559	1.339	1.102	0.906	0.669	2.913	625	10300	13	28700	15900	8	x	M6
1 1/2	1.500	x	2.559	1.339	1.102	0.906	0.669	2.913	655	10300	13	27700	15900	8	x	M6
-	-	-	-	-	-	-	-	-	-	-	-	-	-	-	-	-
1 5/8	1.625	x	2.953	1.614	1.299	1.063	0.787	3.307	1180	15700	30	34900	19100	7	x	M8
1 3/4	1.750	x	2.953	1.614	1.299	1.063	0.787	3.307	1270	15700	30	32600	19100	7	x	M8
1 7/8	1.875	x	2.953	1.614	1.299	1.063	0.787	3.504	1330	15700	30	31200	18400	7	x	M8
-	-	-	-	-	-	-	-	-	-	-	-	-	-	-	-	-
1 15/16	1.938	x	3.150	1.614	1.299	1.063	0.787	3.504	1390	16600	30	29700	18400	7	x	M8
2	2.000	x	3.150	1.614	1.299	1.063	0.787	3.504	1390	16600	30	29200	18400	7	x	M8
2 1/8	2.125	x	3.346	1.614	1.299	1.063	0.787	3.701	1730	17100	30	31000	19100	8	x	M8
2 3/16	2.188	x	3.346	1.614	1.299	1.063	0.787	3.701	1770	17100	30	30400	19100	8	x	M8
2 1/4	2.250	x	3.543	1.614	1.299	1.063	0.787	3.898	1860	17100	30	28300	17700	8	x	M8
2 3/8	2.375	x	3.543	1.614	1.299	1.063	0.787	3.898	1950	17100	30	27000	17700	8	x	M8
2 7/16	2.438	x	3.740	1.614	1.299	1.063	0.787	4.094	2230	18000	30	29800	19100	9	x	M8
2 1/2	2.500	x	3.740	1.614	1.299	1.063	0.787	4.094	2290	18000	30	29100	19100	9	x	M8
2 9/16	2.563	x	3.740	1.614	1.299	1.063	0.787	4.094	2350	18000	30	28400	19100	9	x	M8
2 11/16	2.688	x	4.331	1.969	1.575	1.260	0.945	4.685	3530	29200	61	32000	19900	8	x	M10
2 3/4	2.750	x	4.331	1.969	1.575	1.260	0.945	4.685	3620	29200	61	31200	19900	8	x	M10
2 7/8	2.875	x	4.528	1.969	1.575	1.260	0.945	4.882	3690	29200	61	29000	18400	8	x	M10
2 15/16	2.938	x	4.528	1.969	1.575	1.260	0.945	4.882	3800	29200	61	28300	18400	8	x	M10
3	3.000	x	4.724	1.969	1.575	1.260	0.945	5.079	4050	29200	61	26800	17700	8	x	M10
3 1/4	3.250	x	4.921	1.969	1.575	1.260	0.945	5.276	4730	31500	61	29100	19100	9	x	M10
3 3/8	3.375	x	4.921	1.969	1.575	1.260	0.945	5.276	4880	31500	61	28300	19100	9	x	M10
3 7/16	3.438	x	4.921	1.969	1.575	1.260	0.945	5.472	4980	31500	61	27600	18400	9	x	M10
3 1/2	3.500	x	5.118	1.969	1.575	1.260	0.945	5.472	5130	31500	61	26800	18400	9	x	M10
3 3/4	3.750	x	5.315	1.969	1.575	1.260	0.945	5.669	6040	36000	61	28300	19900	10	x	M10
3 15/16	3.938	x	5.709	2.205	1.732	1.339	1.024	6.063	7450	38200	107	29700	21000	8	x	M12
4	4.000	x	5.709	2.205	1.732	1.339	1.024	6.063	7560	38200	107	29200	21000	8	x	M12
4 7/16	4.438	x	6.102	2.205	1.732	1.339	1.024	6.457	8110	38200	107	27500	19600	8	x	M12
4 3/4	4.750	x	6.496	2.205	1.732	1.339	1.024	6.850	10000	45000	107	29700	20600	9	x	M12
4 15/16	4.938	x	7.087	2.520	2.047	1.654	1.339	7.441	13400	56200	107	27900	19900	12	x	M12
5	5.000	x	7.087	2.520	2.047	1.654	1.339	7.441	14000	56200	107	27000	19900	12	x	M12
5 7/16	5.438	x	7.480	2.677	2.126	1.654	1.339	7.835	16100	60700	170	25700	18400	9	x	M14
5 15/16	5.938	x	7.874	2.677	2.126	1.654	1.339	8.228	18900	71900	170	26800	19900	10	x	M14
-	-	-	-	-	-	-	-	-	-	-	-	-	-	-	-	-
6 7/16	6.438	x	8.858	3.071	2.520	2.047	1.732	9.213	22300	76400	170	20300	15200	12	x	M14
6 15/16	6.938	x	9.252	3.071	2.520	2.047	1.732	9.606	23600	76400	170	19600	15200	12	x	M14

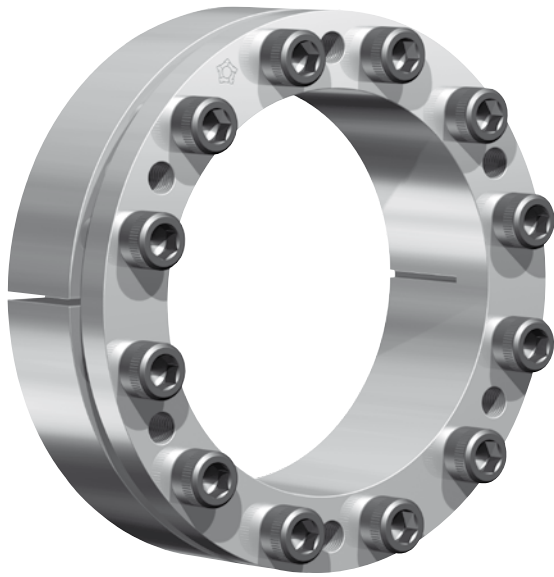
**7006 ECOLOC:**

The new locking assemblies are interchangeable with

KTR	KTR 206
TOLLOK	TLK 133
B-Loc	B-106

Dimensions and technical data are identical or similar, and must be checked before use

other sizes on request



# ECOLOC

As world leader in the shaft-hub connector market, RINGFEDER POWER TRANSMISSION has more to offer today than ever before. Top technical know-how combined with improved production and sales organization are available to anyone who appreciates the benefits of application experience, flexibility, innovation and reliability.



## Hotline

+1 201 666-3320



## Fax

+1 201 664-6053



**Delivery /** within 24 hours



## RINGFEDER POWER TRANSMISSION Quality Management

DIN EN ISO 14001,  
DIN EN ISO 9001:2000,  
ISO/TS 16949:2000

## Use our Strength!

**RINGFEDER POWER TRANSMISSION USA CORPORATION** · 165 Carver Avenue, P.O. Box 691 Westwood, NJ 07675, USA  
Toll Free: +1 888 746-4333 · Phone: +1 201 666 3320 · Fax: +1 201 664 6053 · E-mail: [sales.usa@ringfeder.com](mailto:sales.usa@ringfeder.com)/[sales.usa@gerwah.com](mailto:sales.usa@gerwah.com)