

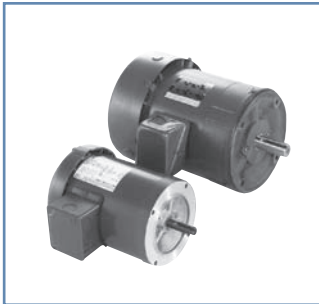


## THREE PHASE TEFC GENERAL PURPOSE



### FEATURES:

- Ball bearings, mechanically locked on shaft end
- 1.15 Service factor
- Rolled steel 56-145T frame motors
- UL Recognized and CSA Certified



### THREE PHASE TEFC 1750 RPM C-FACE MOTORS

HP	VOLTS	FRAME	CAT. NO.	NOM. EFF.	F.L. AMPS	WEIGHT LBS	"LQ" DIM.	FOOTNOTE
1/4	208-230/460	56C	G547	66.0	1.2-1.3/.65	14	7.88	20, 24
1/3	208-230/460	56C	G502	68.0	1.5-1.6/0.8	15	8.13	20, 24
1/2	208-230/460	56C	G507	68.0	2.1-2.2/1.1	17	8.63	20, 24
3/4	208-230/460	56C	G522	75.5	2.7-2.8/1.4	21	9.13	20, 24
1	208-230/460	56C	G527	77.0	3.5-3.6/1.8	27	10.26	20
1-1/2	208-230/460	56C	G541	80.0	4.8-4.8/2.4	29	10.26	20
2	208-230/460	56C	G544	82.5	6.0-5.8/2.9	39	11.75	20
3	208-230/460	182TC	C223	82.5	8.0/4.0	76	13.07	F, 24
5	208-230/460	184TC	C224	86.5	13.0/6.5	92	14.07	F, 20, 24
7-1/2	208-230/460	213TC	C225	87.5	22.0-19.4/9.7	103	16.09	F, 20, 24
10	208-230/460	215TC	C226	88.5	27.6-25.0/12.5	135	17.59	F, 20, 24
15	208-230/460	254TC	C227	88.5	41.0-38.6/19.3	179	19.24	AL, F, 24
20	208-230/460	256TC	(1) U724	91.0	51.0/25.5	225	20.99	AL, F, 20, 24
25	208-230/460	284TC	(1) U725	92.4	68.0-63.0/31.5	425	21.68	F, 20, 24
30	208-230/460	286TC	(1) U726	92.4	81.0-74.0/37.0	455	23.18	F, 20, 24
40	203/460	324TC	(1) U727	92.4	100/50.0	543	23.97	F, 20, 24
50	203/460	326TC	(1) U728	92.4	122/61.0	600	25.47	F, 20, 24

NOTES: (1) FRAME IS C FACE WITH RIGID BASE

### FEATURES:

- Ball bearings, mechanically locked on shaft end
- 1.15 Service factor
- Rolled steel 56-145T frame motors
- UL Recognized and CSA Certified



### 575 VOLT THREE PHASE TEFC 1750 RPM C-FACE MOTORS



HP	VOLTS	FRAME	CAT. NO.	NOM. EFF.	F.L. AMPS	WEIGHT LBS	"LQ" DIM.	FOOTNOTE
1/3	575	56C	(1) G503	68.0	0.64	15	8.13	24
1/2	575	56C	(1) G508	68.0	0.90	18	8.63	24
3/4	575	56C	(1) G523	75.5	1.10	20	9.13	24
1	575	56C	(1) G528	77.0	1.45	26	10.26	
1-1/2	575	56C	(1) G548	80.0	1.90	28	10.26	
2	575	145TC	(1) G549	82.5	2.25	41	11.57	
3	575	182TC	(2) C383	87.5	3.40	77	13.07	F, 24
5	575	184TC	(2) C387	88.5	5.20	87	14.03	F, 24
7-1/2	575	213TC	(2) C391	89.5	8.00	122	16.35	F, 24
10	575	215TC	(2) C394	89.5	10.40	135	17.85	F, 24

NOTES:(1) C FACE - FOOTLESS

(2) C FACE WITH REMOVABLE BASE

#### FOOTNOTES:

AL ALUMINUM FRAME CONSTRUCTION  
F CLASS F INSULATION

20 RATED 60/50 HERTZ, 190/380 OR 380 VOLT AT NEXT LOWER HORSEPOWER  
24 MOTOR WILL NOT ACCEPT BRAKE KIT

### APPLICATION GUIDELINES

Guidelines for Application General Purpose, Three Phase Motors on Variable Frequency Drives Meets NEMA MG-1-1998 Part 30 and Part 31 Section 4.4.2

ENCLOSURE	EFFICIENCY	FRAME	10:1 VARIABLE TORQUE 2:1 C.T.	MAXIMUM INVERTER TO MOTOR CABLE LENGTH @ 3KHZ CARRIER		
				230 V	460 V	575 V
Totally Enclosed	Standard	56-326	X	600 ft	125 ft	40 ft

Don't see the motor you need?  
**Contact Hub City.**  
Many more stock motors available.

- CONTACT MARATHON ELECTRIC FOR GUIDELINES IN APPLYING EXPLOSION PROOF MOTORS ON INVERTERS.
- CARRIER FREQUENCY IS MEASURED PHASE-TO-PHASE, NOT PHASE-TO-BUS. HIGHER CARRIER FREQUENCIES REQUIRE SHORTER CABLE CONTACT HUB CITY FOR DETAILS.

SPECIFICATIONS ARE SUBJECT TO CHANGE WITHOUT NOTICE.

CALL: (605) 225-0360 • FAX: (605) 225-0567